



 (F) Primary 3 - Term 1 (CA1) Science (Henry Park) ↗ Duplicate Print Delete Assign Test

Test Introduction

[+ Add Introduction](#)

35 Questions (38 Points)

Question Bank: 19,439 Questions 

Test Questions

2 Test Assignments

Question 1

Primary 3 Science » Primary 3 Science (Term 1)

2 pts

Section A Multiple-Choice Questions (30 marks)

For each question from 1 to 15, four options are given. One of them is the correct answer.

The diagram below shows Organism X.

Which of the following statements is **correct** about Organism X?

- A) It has leaves.
- B) It hunts for food.
- C) It makes its own food.
- D) It feeds on dead organisms.

Question Type: Multiple Choice
Randomize Answers: No
Date Added: Wed 5th Feb 2020
Last Modified: N/A
QID#: 18,622,618

[Answers](#) |
 [Edit](#) |
 [Duplicate](#) |
 [Used In](#) |
 [Reorder](#)

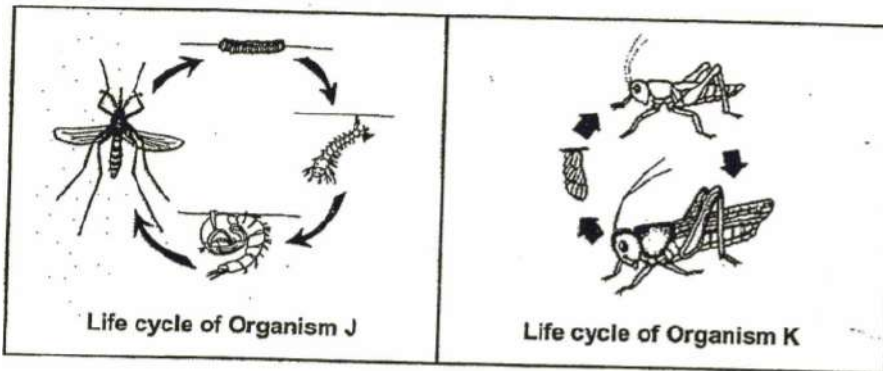
[Remove From Test](#)

Question 2

Primary 3 Science » Primary 3 Science (Term 1)

2 pts

Bob compared the life cycles of organisms J and K as shown below.



Which one of the following comparisons is correct?

	Organism J	Organism K
(1)	Eggs are laid in water.	Eggs are laid on land.
(2)	The young has wings.	The young does not have wings.
(3)	The young undergoes moulting.	The young does not undergo moulting.
(4)	The young looks like the adult.	The young does not look like the adult.

- A) Option 1
 B) Option 2
 C) Option 3
 D) Option 4

Question Type: Multiple Choice
Randomize Answers: No
Date Added: Wed 5th Feb 2020
Last Modified: N/A
QID#: 18,622,626

[Answers](#) |
 [Edit](#) |
 [Duplicate](#) |
 [Used In](#) |
 [Reorder](#)

[Remove From Test](#)

Question 3

Primary 3 Science » Primary 3 Science (Term 1)

2 pts

- A) A only
 B) B only
 C) A and C only
 D) B and C only

Question Type: Multiple Choice
Randomize Answers: No

Date Added: Wed 5th Feb 2020
 Last Modified: N/A
 QID#: 18,622,629

[Answers](#) | [Edit](#) | [Duplicate](#) | [Used In](#) | [Reorder](#)

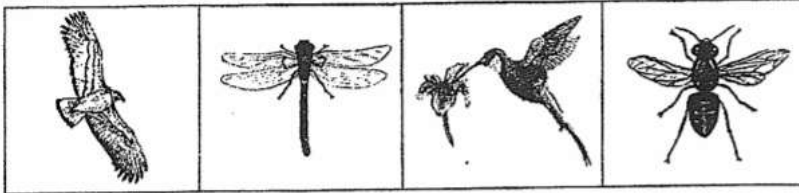
[Remove From Test](#)

Question 4

Primary 3 Science » Primary 3 Science (Term 1)

2 pts

Look at the pictures below.



In what way are the above animals similar?

- A) They have wings
- B) They have 2 legs
- C) They have feelers
- D) They have feathers

Question Type: Multiple Choice
 Randomize Answers: No
 Date Added: Wed 5th Feb 2020
 Last Modified: N/A
 QID#: 18,622,631

[Answers](#) | [Edit](#) | [Duplicate](#) | [Used In](#) | [Reorder](#)

[Remove From Test](#)

Question 5

Primary 3 Science » Primary 3 Science (Term 1)

2 pts

Which one of the following differences between animals and fungi is correct?

	Animals	Fungi
(1)	Cannot make their own food	Can make their own food
(2)	Need water	Do not need water
(3)	Is not a plant	Is a plant
(4)	Do not reproduce using spores	Reproduce using spores

- A) Option 1
- B) Option 2
- C) Option 3
- D) Option 4

Question Type: Multiple Choice
 Randomize Answers: No
 Date Added: Wed 5th Feb 2020
 Last Modified: N/A

QID#: 18,622,634

[Answers](#) | [Edit](#) | [Duplicate](#) | [Used In](#) | [Reorder](#)[Remove From Test](#)**Question 6**

Primary 3 Science » Primary 3 Science (Term 1)

2 pts

A scientist found a new animal and named it **Kihansi**.

He observed **Kihansi** and recorded its characteristics below.

Characteristics of Kihansi

- It hatches from eggs.
- It has moist skin.
- It can live on land and in water.

Which group of animals do you think the **Kihansi** is likely to belong to?

- A) Insects
B) Reptiles
C) Mammals
✓ D) Amphibians

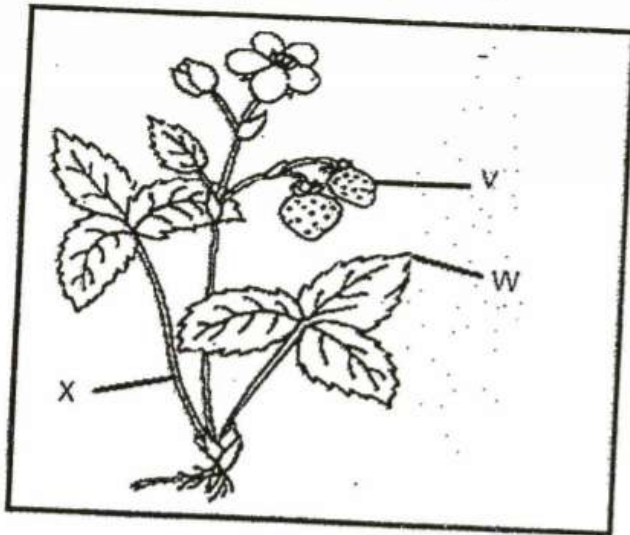
Question Type: Multiple Choice
Randomize Answers: No
Date Added: Wed 5th Feb 2020
Last Modified: N/A
QID#: 18,622,639

[Answers](#) | [Edit](#) | [Duplicate](#) | [Used In](#) | [Reorder](#)[Remove From Test](#)**Question 7**

Primary 3 Science » Primary 3 Science (Term 1)

2 pts

The diagram below shows a strawberry plant.



Which of the following is correct?

- (1)
(2)
(3)
(4)

V	W	X
flower	root	leaf
fruit	leaf	root
flower	fruit	leaf
fruit	leaf	stem

- A) Option 1
B) Option 2
C) Option 3
✓ D) Option 4

Question Type: Multiple Choice
Randomize Answers: No
Date Added: Wed 5th Feb 2020
Last Modified: N/A
QID#: 18,622,645

[Answers](#) | [Edit](#) | [Duplicate](#) | [Used In](#) | [Reorder](#)

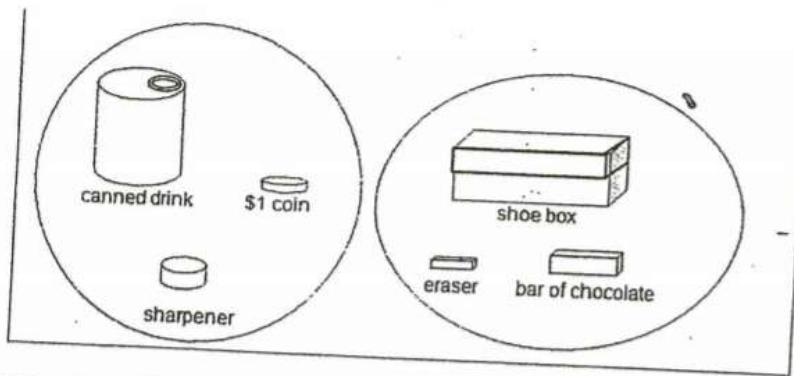
[Remove From Test](#)

Question 8

Primary 3 Science » Primary 3 Science (Term 1)

2 pts

Look at the classification of some objects below.



Choose the correct description on how the objects are classified.

- ✓ A) The objects are classified according to their shapes.
- B) The objects in each group do not have any similarity at all.
- C) The objects are placed in the two groups based on their sizes.
- D) The objects are placed in the two groups based on their uses.

Question Type: Multiple Choice
Randomize Answers: No
Date Added: Wed 5th Feb 2020
Last Modified: N/A
QID#: 18,622,655

[Answers](#) | [Edit](#) | [Duplicate](#) | [Used In](#) | [Reorder](#)

[Remove From Test](#)

Question 9

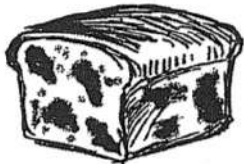



Primary 3 Science » Primary 3 Science (Term 1)

2 pts

Some observations about living thing X are stated below.

Observations
It produces spores
It does not make its own food
It needs air, water and food to survive

Living thing X is likely to be _____.

(1)	Bread Mould 	(2)	Fern 
(3)	Ixora 	(4)	Insect 

- A) Option 1



- B) Option 2
- C) Option 3
- D) Option 4

Question Type: Multiple Choice
Randomize Answers: No
Date Added: Wed 5th Feb 2020
Last Modified: N/A
QID#: 18,622,659

[Answers](#) | [Edit](#) | [Duplicate](#) | [Used In](#) | [Reorder](#)

[Remove From Test](#)

Question 10

Primary 3 Science » Primary 3 Science (Term 1)

2 pts

Which of the following is **NOT** a purpose of classification?

- A To mix things up so that there is diversity.
- B To make it easy to find the things we want.
- C To help us put things in an orderly manner.
- D To find similarities and differences in the diversity of living things.

✓ A) A only

- B) A and B only
- C) B and C only
- D) C and D only

Question Type: Multiple Choice
Randomize Answers: No
Date Added: Wed 5th Feb 2020
Last Modified: N/A
QID#: 18,622,666

[Answers](#) | [Edit](#) | [Duplicate](#) | [Used In](#) | [Reorder](#)

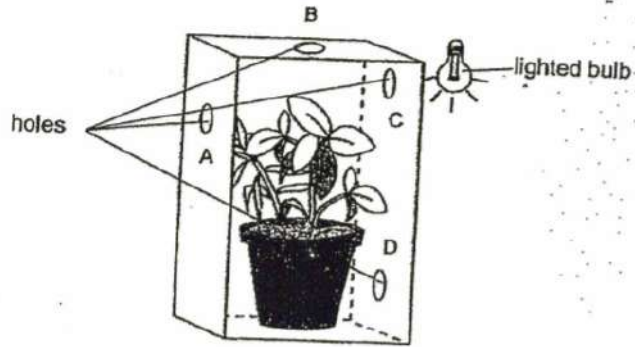
[Remove From Test](#)

Question 11

Primary 3 Science » Primary 3 Science (Term 1)

2 pts

- A young plant was placed in a thick cardboard box in a dark room as shown below. Four holes A, B, C and D, were made on the sides of the box to allow light to enter.



Which one of the holes would the plant **most likely** grow towards?

- A) A
 B) B
 ✓ C) C
 D) D

Question Type: Multiple Choice
 Randomize Answers: No
 Date Added: Wed 5th Feb 2020
 Last Modified: N/A
 QID#: 18,622,671

[Answers](#) |
 [Edit](#) |
 [Duplicate](#) |
 [Used In](#) |
 [Reorder](#)

[Remove From Test](#)

Question 12

Primary 3 Science » Primary 3 Science (Term 1)

2 pts

The table below describes the stages of the life cycles of four animals, P, Q, R and S.

	Animal P	Animal Q	Animal R	Animal S
The young moults.	✓	×	×	×
The eggs are laid in water.	✓	✓	✓	×
The young looks like the adult.	×	✓	×	✓

A tick (✓) indicates that the description is correct and a cross (×) indicates that the description is wrong.



Which of the following animal is likely to be a frog?

- A) Animal P
 B) Animal Q
 ✓ C) Animal R
 D) Animal S

Question Type: Multiple Choice
Randomize Answers: No
Date Added: Wed 5th Feb 2020
Last Modified: Wed 5th Feb 2020
QID#: 18,622,676

[Answers](#) | [Edit](#) | [Duplicate](#) | [Used In](#) | [Reorder](#)

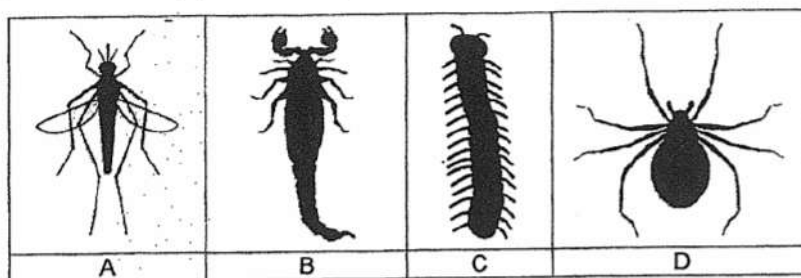
[Remove From Test](#)

Question 13

Primary 3 Science » Primary 3 Science (Term 1)

2 pts

The picture below shows the shadows of various types of living things.



Which of the following is an insect?

- ✓ A) A
- B) B
- C) C
- D) D

Question Type: Multiple Choice
Randomize Answers: No
Date Added: Wed 5th Feb 2020
Last Modified: N/A
QID#: 18,622,678

[Answers](#) | [Edit](#) | [Duplicate](#) | [Used In](#) | [Reorder](#)

[Remove From Test](#)

Question 14

Primary 3 Science » Primary 3 Science (Term 1)

2 pts

David planted four balsam plants in 4 similar pots.

He placed the pots under different conditions as shown in the table below.

Plant	Conditions			
	Air	Sunlight	Water	Fertiliser
A	✓	✓	✓	X
B	X	✓	✓	✓
C	✓	X	X	✓
D	X	✓	X	✓

Legend
✓ – present
X – not present

Which of the following plants is likely to live the longest?

- ✓ A) Plant A
- B) Plant B
- C) Plant C
- D) Plant D

Question Type: Multiple Choice
Randomize Answers: No
Date Added: Wed 5th Feb 2020
Last Modified: N/A
QID#: 18,622,682

[Answers](#) | [Edit](#) | [Duplicate](#) | [Used In](#) | [Reorder](#)

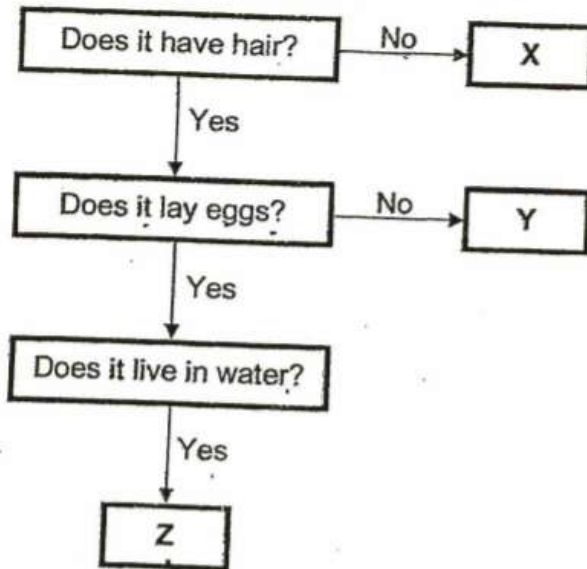
[Remove From Test](#)

Question 15

Primary 3 Science » Primary 3 Science (Term 1)

2 pts

Sam observed three animals and drew the following chart.



Which of the following is **NOT** likely to be a mammal?

- ✓ A) X only
- B) Y only
- C) X and Y only
- D) Y and Z only

Question Type: Multiple Choice
Randomize Answers: No
Date Added: Wed 5th Feb 2020
Last Modified: N/A
QID#: 18,622,688

[Answers](#) | [Edit](#) | [Duplicate](#) | [Used In](#) | [Reorder](#)

[Remove From Test](#)

Question 16

Primary 3 Science » Primary 3 Science (Term 1)

1 pt

Section B: Structured Questions (8 marks)

Mould is a non-flowering plant.

- A) True
- ✓ B) False

Question Type: True False
Date Added: Wed 5th Feb 2020
Last Modified: N/A
QID#: 18,622,698

[Answers](#) | [Edit](#) | [Duplicate](#) | [Used In](#) | [Reorder](#)

[Remove From Test](#)

Question 17

Primary 3 Science » Primary 3 Science (Term 1)

1 pt

Some fungi can be eaten.

- ✓ A) True
B) False

Question Type: True False
Date Added: Wed 5th Feb 2020
Last Modified: N/A
QID#: 18,622,701

[Answers](#) | [Edit](#) | [Duplicate](#) | [Used In](#) | [Reorder](#)

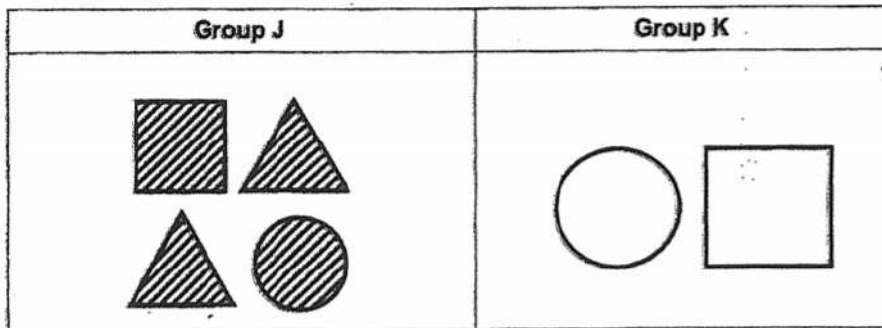
[Remove From Test](#)

Question 18

Primary 3 Science » Primary 3 Science (Term 1)

1 pt

Observe the shapes below.



The shapes shown above are classified into 2 groups.

How are they classified?

J: Shapes that are _____.

Group

Accepted answers:

- ✓ shaded

Question Type: Free Text
Date Added: Wed 5th Feb 2020
Last Modified: N/A
QID#: 18,622,709

[Answers](#) | [Edit](#) | [Duplicate](#) | [Used In](#) | [Reorder](#)

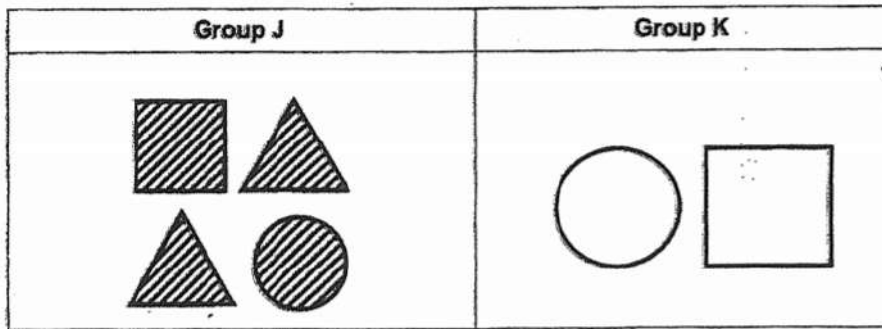
[Remove From Test](#)

Question 19

Primary 3 Science » Primary 3 Science (Term 1)

1 pt

Observe the shapes below.



The shapes shown above are classified into 2 groups.

How are they classified?

Group

K: Shapes that are _____.

Accepted answers:

✓ not shaded

Question Type: Free Text
 Date Added: Wed 5th Feb 2020
 Last Modified: N/A
 QID#: 18,622,713

[Answers](#) | [Edit](#) | [Duplicate](#) | [Used In](#) | [Reorder](#)

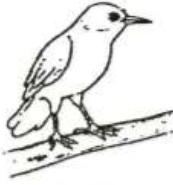
[Remove From Test](#)

Question 20

Primary 3 Science » Primary 3 Science (Term 1)

1 pt

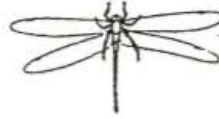
Observe the six animals below carefully.



Mynah



Ostrich



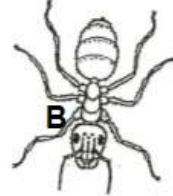
Dragonfly



Bed bug

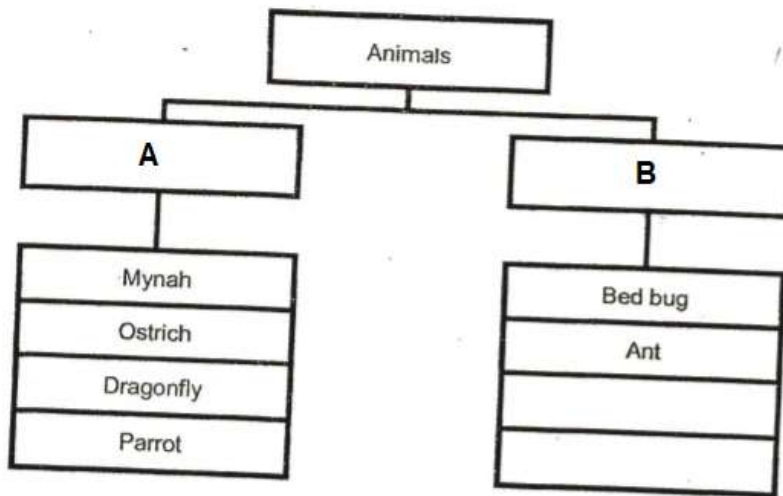


Parrot



Ant

Write suitable headings for the two groups in the boxes below.



What is the heading for A?

Accepted answers:

- ✓ Have wings
- ✓ wings

Question Type: Free Text
 Date Added: Wed 5th Feb 2020
 Last Modified: N/A
 QID#: 18,622,770

[Answers](#) | [Edit](#) | [Duplicate](#) | [Used In](#) | [Reorder](#)

[Remove From Test](#)

Question 21

Primary 3 Science » Primary 3 Science (Term 1)

1 pt

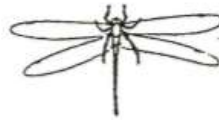
Observe the six animals below carefully.



Mynah



Ostrich



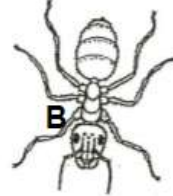
Dragonfly



Bed bug

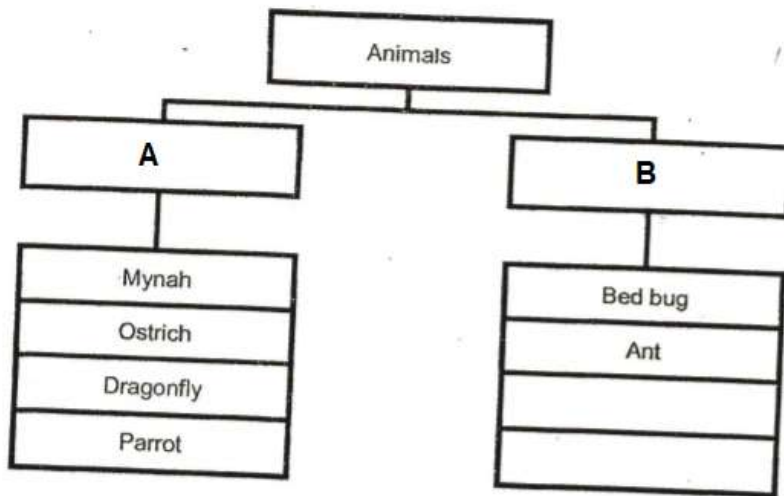


Parrot



Ant

Write suitable headings for the two groups in the boxes below.



What is the heading for B?

Accepted answers:

✓ No wings

Question Type: Free Text
 Date Added: Wed 5th Feb 2020
 Last Modified: N/A
 QID#: 18,622,773

[Answers](#) |
 [Edit](#) |
 [Duplicate](#) |
 [Used In](#) |
 [Reorder](#)

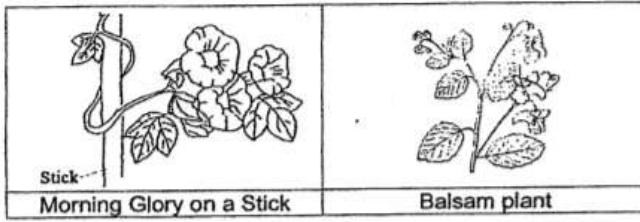
[Remove From Test](#)

Question 22

Primary 3 Science » Primary 3 Science (Term 1)

1 pt

Study the pictures below and fill in the blanks with suitable words from the box provided.



weak	support	shade	strong
------	---------	-------	--------

The morning glory plant climbs on the stick so that it can grow towards the sunlight.

The function of the stick is to provide (a) _____ to the plant as it has a (b) _____ stem.

Fill in the blank for (a).

Accepted answers:

✓ support

Question Type: Free Text
 Date Added: Wed 5th Feb 2020
 Last Modified: Wed 5th Feb 2020
 QID#: 18,622,778

[Answers](#) | [Edit](#) | [Duplicate](#) | [Used In](#) | [Reorder](#)

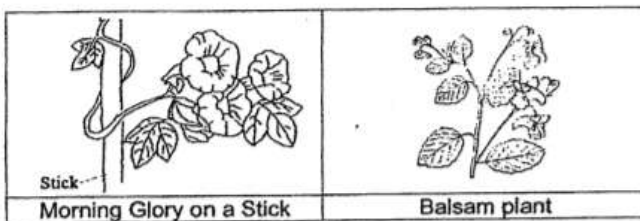
[Remove From Test](#)

Question 23

Primary 3 Science » Primary 3 Science (Term 1)

1 pt

Study the pictures below and fill in the blanks with suitable words from the box provided.



weak	support	shade	strong
------	---------	-------	--------

The morning glory plant climbs on the stick so that it can grow towards the sunlight.

The function of the stick is to provide (a) _____ to the plant as it has a (b) _____ stem.

Fill in the blank for (b).

Accepted answers:

✓ weak

Question Type: Free Text
Date Added: Wed 5th Feb 2020
Last Modified: Wed 5th Feb 2020
QID#: 18,622,780

[Answers](#) | [Edit](#) | [Duplicate](#) | [Used In](#) | [Reorder](#)

[Remove From Test](#)

Question 24

Primary 3 Science » Primary 3 Science (Term 1)

0 pts

Section C: Open-Ended Questions

This question is designed for extended answers that parent/ teacher will have to assign and guide child to attempt after the test has been completed.

Grading: This question type is not graded on this system and will not affect the final score as it was designed in such a way that it requires manual assistance.

Observe the two types of organisms below.



State one similar characteristic between the Organisms S and T.

Question Type: Essay
Date Added: Wed 5th Feb 2020
Last Modified: Fri 27th Mar 2020
QID#: 18,622,786

Correctly answered feedback

They need air, food and water to stay alive.

Incorrectly answered feedback

They need air, food and water to stay alive.

[Answers](#) | [Edit](#) | [Duplicate](#) | [Used In](#) | [Reorder](#)

[Remove From Test](#)

Question 25

Primary 3 Science » Primary 3 Science (Term 1)

0 pts

Observe the two types of organisms below.



John classified Organisms S and T as plants. Is John correct? Explain why.

Question Type: Essay
Date Added: Wed 5th Feb 2020
Last Modified: Fri 27th Mar 2020
QID#: 18,622,790

Correctly answered feedback

No. John is incorrect. Organism T is not a plant as it cannot make food.

Incorrectly answered feedback

No. John is incorrect. Organism T is not a plant as it cannot make food.

[Answers](#) | [Edit](#) | [Duplicate](#) | [Used In](#) | [Reorder](#)

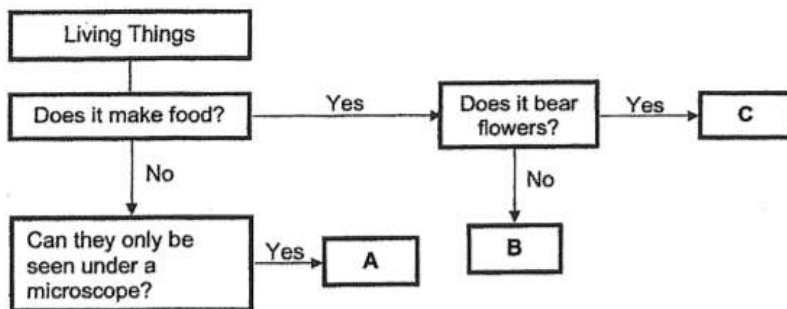
[Remove From Test](#)

Question 26

Primary 3 Science » Primary 3 Science (Term 1)

0 pts

Study the flow chart about some living things.



From the chart above, **describe** two characteristics of living thing C.

Question Type: Essay
Date Added: Wed 5th Feb 2020
Last Modified: Fri 27th Mar 2020
QID#: 18,622,795

Correctly answered feedback

Living thing C bears flower and can make food.

Incorrectly answered feedback

Living thing C bears flower and can make food.

[Answers](#) | [Edit](#) | [Duplicate](#) | [Used In](#) | [Reorder](#)

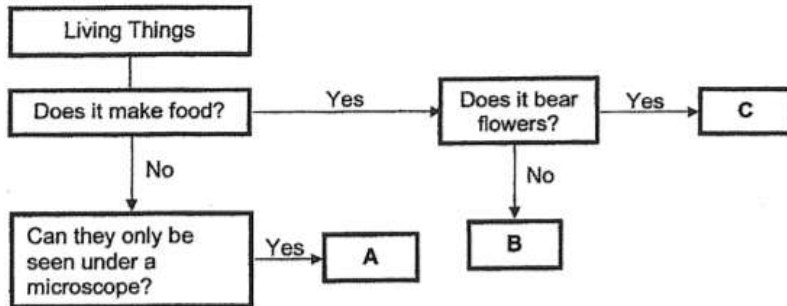
[Remove From Test](#)

Question 27

Primary 3 Science » Primary 3 Science (Term 1)

0 pts

Study the flow chart about some living things.



Which of the living things, A, B or C, is a bacteria?

Question Type: Essay
Date Added: Wed 5th Feb 2020
Last Modified: Fri 27th Mar 2020
QID#: 18,622,801

Correctly answered feedback

A is a bacteria.

Incorrectly answered feedback

A is a bacteria.

[Answers](#) | [Edit](#) | [Duplicate](#) | [Used In](#) | [Reorder](#)

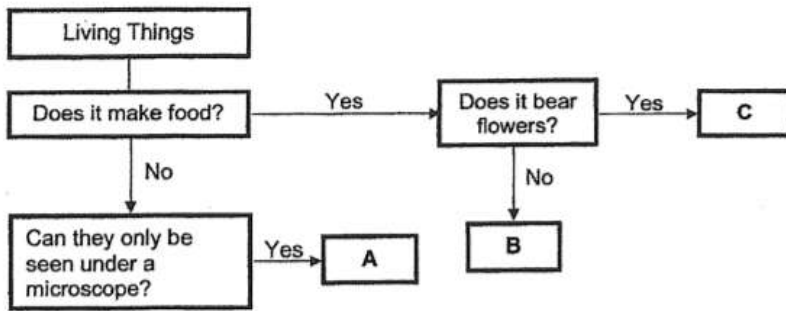
[Remove From Test](#)

Question 28

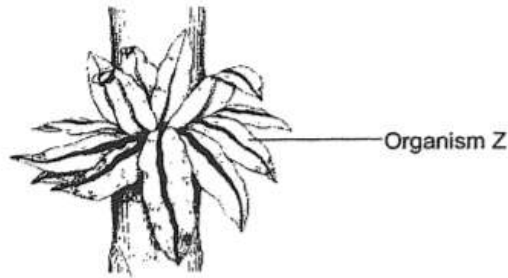
Primary 3 Science » Primary 3 Science (Term 1)

0 pts

Study the flow chart about some living things.



Look at Organism Z shown below.



Which living thing, A, B or C is Organism Z likely to be?

Question Type: Essay
Date Added: Wed 5th Feb 2020
Last Modified: Fri 27th Mar 2020
QID#: 18,622,805

Correctly answered feedback

B

Incorrectly answered feedback

B

[Answers](#) | [Edit](#) | [Duplicate](#) | [Used In](#) | [Reorder](#)

[Remove From Test](#)

Question 29

Primary 3 Science » Primary 3 Science (Term 1)

0 pts

Professor Albert conducted an experiment to find out how different conditions affect the growth of bacteria.

The results of the experiment are shown in the table below.

Condition	Growth of Bacteria		
	Day 1	Day 3	Day 5
A	•	••	•••
B	-	-	•
C	•	•	•

Legend

- none • very little growth •• some growth ••• a lot of growth

Which type of condition, A, B or C, best supports the growth of bacteria?

Question Type: Essay
Date Added: Wed 5th Feb 2020
Last Modified: Fri 27th Mar 2020
QID#: 18,622,811

Correctly answered feedback

A

Incorrectly answered feedback

A

[Answers](#) | [Edit](#) | [Duplicate](#) | [Used In](#) | [Reorder](#)

[Remove From Test](#)**Question 30**

Primary 3 Science » Primary 3 Science (Term 1)

0 pts

Professor Albert conducted an experiment to find out how different conditions affect the growth of bacteria.

The results of the experiment are shown in the table below.

Condition	Growth of Bacteria		
	Day 1	Day 3	Day 5
A	•	••	•••
B	-	-	•
C	•	•	•

Legend

- none • very little growth •• some growth ••• a lot of growth

Professor Albert cannot observe the growth of bacteria with his eyes. Explain why he cannot observe the bacteria with his naked eyes.

Question Type: Essay
Date Added: Wed 5th Feb 2020
Last Modified: Fri 27th Mar 2020
QID#: 18,622,817

Correctly answered feedback

The bacteria is a microorganism which cannot be seen with naked eyes.

Incorrectly answered feedback

The bacteria is a microorganism which cannot be seen with naked eyes.

[Answers](#) | [Edit](#) | [Duplicate](#) | [Used In](#) | [Reorder](#)

[Remove From Test](#)**Question 31**

Primary 3 Science » Primary 3 Science (Term 1)

0 pts

Professor Albert conducted an experiment to find out how different conditions affect the growth of bacteria.

The results of the experiment are shown in the table below.

Condition	Growth of Bacteria		
	Day 1	Day 3	Day 5
A	•	••	•••
B	-	-	•
C	•	•	•

Legend

- none • very little growth •• some growth ••• a lot of growth

Name the instrument Professor Albert needs to use to observe the bacteria.

Question Type: Essay
Date Added: Wed 5th Feb 2020
Last Modified: Fri 27th Mar 2020
QID#: 18,622,822

Correctly answered feedback

A microscope

Incorrectly answered feedback

A microscope

[Answers](#) | [Edit](#) | [Duplicate](#) | [Used In](#) | [Reorder](#)

[Remove From Test](#)

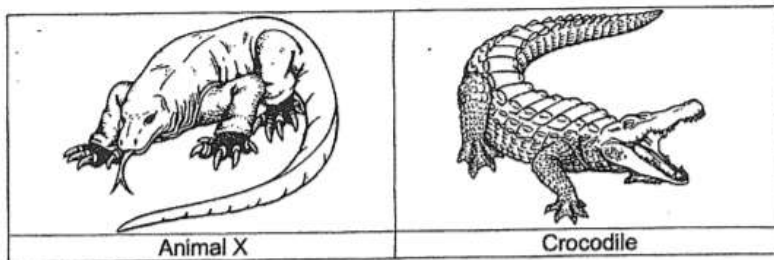
Question 32

Primary 3 Science » Primary 3 Science (Term 1)

0 pts

Jayden went to the zoo and saw Animal X, shown below, moving on the ground.

He noticed that the body covering of the animal looked very similar to the crocodile that he saw earlier.



Name the body covering of Animal X.

Question Type: Essay
Date Added: Wed 5th Feb 2020
Last Modified: Fri 27th Mar 2020
QID#: 18,622,846

Correctly answered feedback

Dry and scaly

Incorrectly answered feedback

Dry and scaly

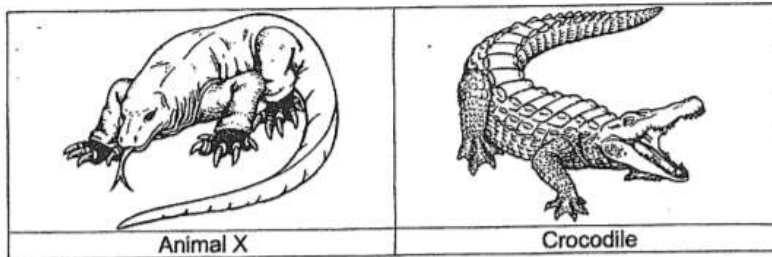
[Answers](#) | [Edit](#) | [Duplicate](#) | [Used In](#) | [Reorder](#)
[Remove From Test](#)**Question 33**

Primary 3 Science » Primary 3 Science (Term 1)

0 pts

Jayden went to the zoo and saw Animal X, shown below, moving on the ground.

He noticed that the body covering of the animal looked very similar to the crocodile that he saw earlier.



Jayden was then asked to classify Animal X in his school worksheet. Which animal group would he classify Animal X?

Question Type: Essay
Date Added: Wed 5th Feb 2020
Last Modified: Fri 27th Mar 2020
QID#: 18,622,851

Correctly answered feedback

Reptile

Incorrectly answered feedback

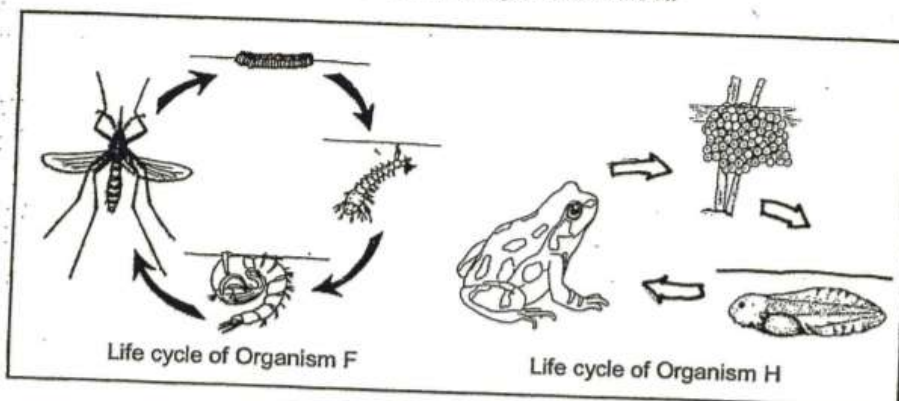
Reptile

[Answers](#) | [Edit](#) | [Duplicate](#) | [Used In](#) | [Reorder](#)
[Remove From Test](#)**Question 34**

Primary 3 Science » Primary 3 Science (Term 1)

0 pts

The diagrams below show the life cycles of organisms F and H.



Based on your observation, state one similarity between the two life cycles shown above.

Question Type: Essay
Date Added: Wed 5th Feb 2020

Last Modified: Fri 27th Mar 2020
 QID#: 18,622,856

Correctly answered feedback

Both have egg stage.

Incorrectly answered feedback

Both have egg stage.

[Answers](#) | [Edit](#) | [Duplicate](#) | [Used In](#) | [Reorder](#)

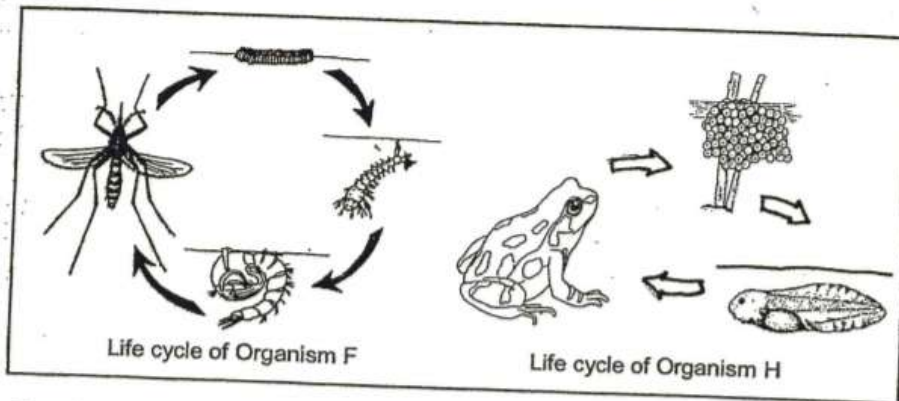
[Remove From Test](#)

Question 35

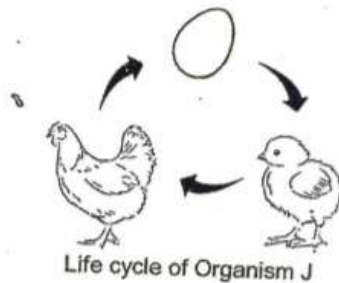
Primary 3 Science » Primary 3 Science (Term 1)

0 pts

The diagrams below show the life cycles of organisms F and H.



The diagram below shows the life cycle of Organism J.



Based on your observation, state one difference between the life cycles of organisms H and J.

Based on your observation, state one difference between the life cycles of organisms H and J.

Question Type: Essay
 Date Added: Wed 5th Feb 2020
 Last Modified: Fri 27th Mar 2020
 QID#: 18,622,929

Correctly answered feedback

Organism J's young looks like the adult but for organism H, the young does not look like the adult.

Incorrectly answered feedback

Organism J's young looks like the adult but for organism H, the young does not look like the adult.

[Answers](#) | [Edit](#) | [Duplicate](#) | [Used In](#) | [Reorder](#)

[Remove From Test](#)

